



Flue Products



www.masportheating.co.nz

Welcome to Glen Dimplex New Zealand, the largest wood fire manufacturer in Australasia and the home of Masport Heating.

Superior build quality, extensive research and development, rigorous quality control and a guarantee of workmanship are values that are synonymous with Masport Heating. It is this commitment to heating your home efficiently that drives us to develop the perfect flue range to suit your wood fire.

We at Masport Heating have in-depth knowledge of solid fuel heating and continue to invest in innovative design and development. We offer a range from a simple effective system to the new Opti flue allow more efficiency for heating your home.

We offer a 12 month warranty for your peace of mind. Rest assured you are buying a quality product from a reliable manufacturer, made in New Zealand.

For more information visit our website www.masportheating.co.nz

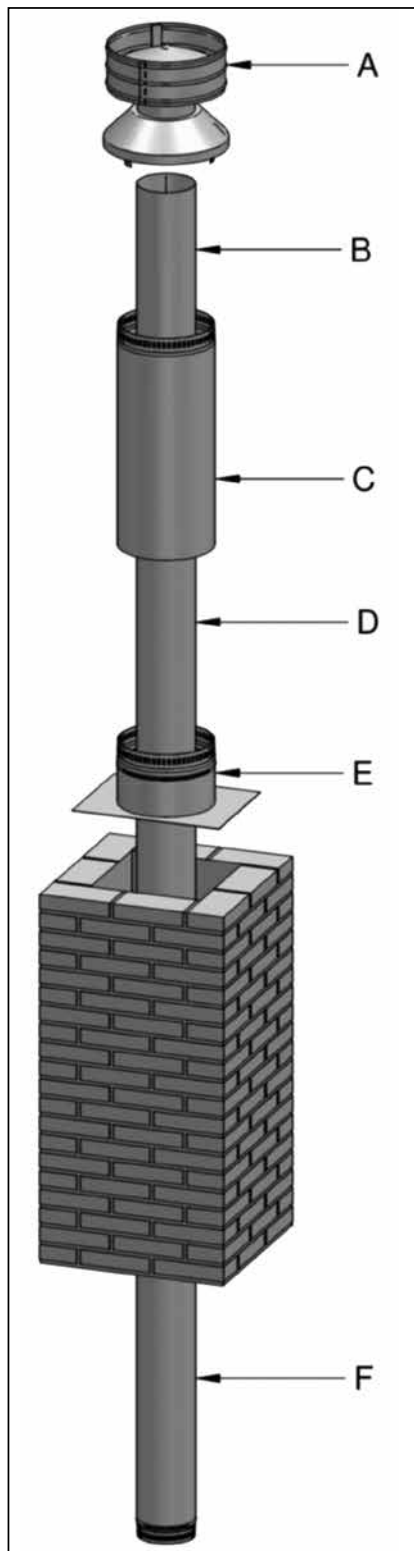


Masport[®]
Heating

Contents

| | |
|-------------------------|----|
| Inbuilt Flue Kit | 4 |
| Zero Clearance Flue Kit | 5 |
| Freestanding Flue Kits | 6 |
| Drop Box Kit | 9 |
| Opti Flue Kit | 10 |
| Opti Angle Flue Kit | 11 |
| Flue Pipe Casings | 12 |
| Flue Restraint Bracket | 13 |
| Ceiling Plates | 14 |
| Cowls | 15 |

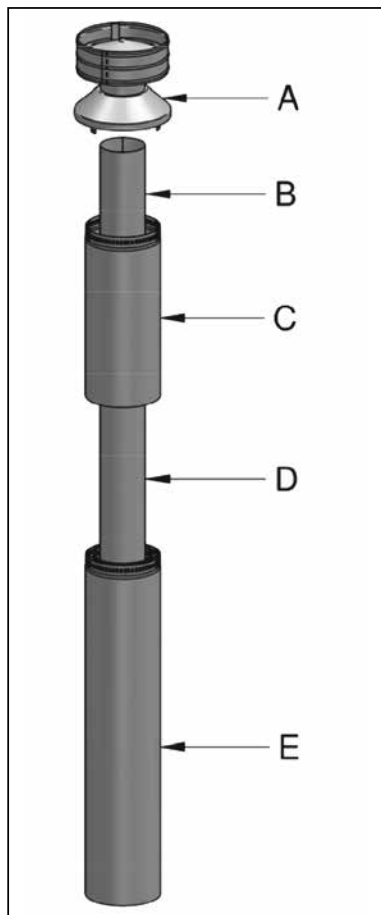




- A** 1 X 150mm Anti Down Drought Combination Cowl
- B** 1 X Flue Pipe 150mm x 600mm - 50mm to Swage, SS
- C** 1 X Flue Outer Casing 250mm x 600mm-Galv.
- D** 2 X Flue Pipe 150mm x 1200mm -50mm to Swage- SS
- E** 1 x Chimney Flashing plate 300mm x 400mm (optional extra)
951911 Galvanised
951912 Satinless Steel
- F** 1 X Flue Pipe 150mm x 1200mm -38mm to Swage- SS

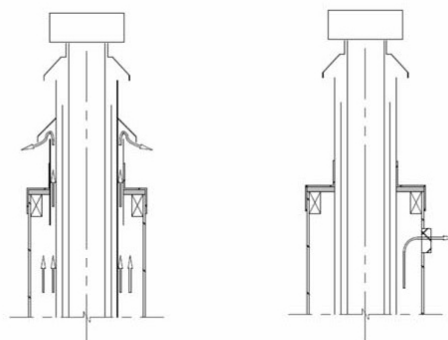
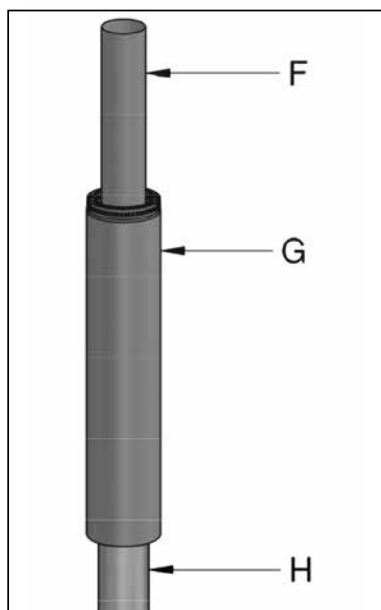
This flue kit has been tested and complies to AS/NZS 2918:2001, Appendix F test.

FLUE 150 ZERO CLEARANCE CEILING KIT
951458

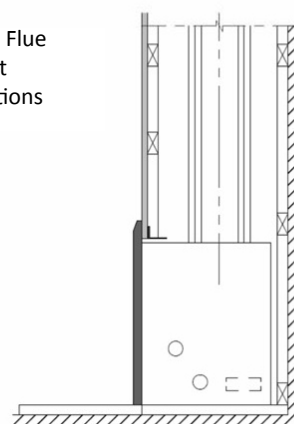


- A** 1 X 150mm Anti Down Drought Combination Cowl
- B** 1 X Flue Pipe 150mm x 600mm- 50mm to Swage, SS
- C** 1 X Flue Outer Slip Casing 253mm x 600mm-Galv.
- D** 1 X Flue Pipe 150mm x 1200mm -38mm to Swage - SS
- E** 1 X Flue Comb. Casing 200/250/1200 - Galv.
- F** 1 X Flue 150 x 1219 -50mm to Swage- SS
- G** 2 X Flue Comb. Casing Ext 200/250/1200 - Galv.
- H** 1 X Flue Pipe 150mm x 1200mm -38mm to Swage- SS

FLUE 150 ZERO CLEARANCE EXT KIT
951459



Schematic of Built-In Flue System with different chase ventilation options



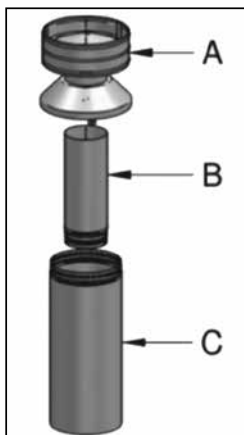
This flue kit has been tested and complies to AS/NZS 2918:2001, Appendix F test.

GDFLU011M

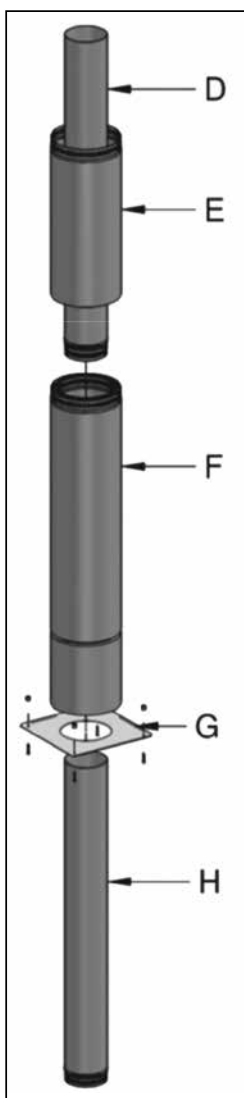
Free Standing Flue Kit 150mm with Combination Cowl

(With 600mm long Outer Slip Extension)

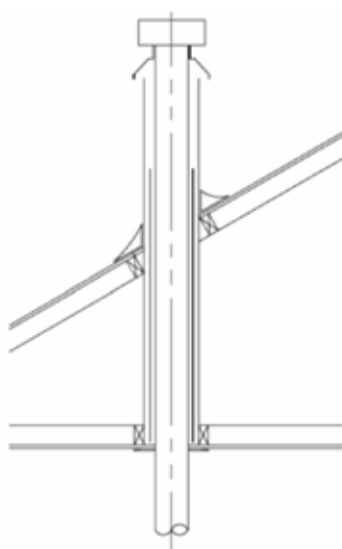
ROOF TERMINATION KIT 951901



STARTER KIT 951902



- A** 1 X 150mm Anti Down Drought Combination Cowl
- B** 1 X Flue 150mm x 405mm - 50mm to Swage, SS
- C** 1 X Flue Outer Slip Casing 253mm x 600mm-Galv.
- D** 1 X Flue 150mm x 1200mm -50mm to Swage- SS
- E** 1 X Flue Outer Casing 250mm x 600mm-Galv.
- F** 1 X Flue Comb. Casing 200/250/1200- Galv.
- G** 1 X Ceiling Plate 150mm (345X345)- SS
- H** 2 X Flue pipe 150mm x 1200mm- 38mm to Swage- SS - VHT
- 4 X Ceiling Plate Ceramic Spacers
- 4 X Screw - 521651



Flat Ceiling with Cavity

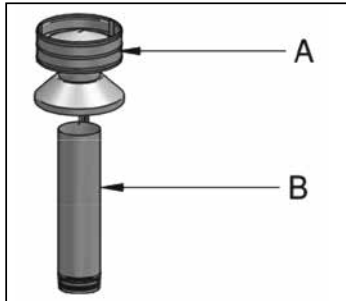
Flue shield come in a separate box.
This flue kit has been tested and complies to AS/NZS 2918:2001, Appendix F test.

GDFLU012M

Free Standing Flue Kit 150 with Combination Cowl

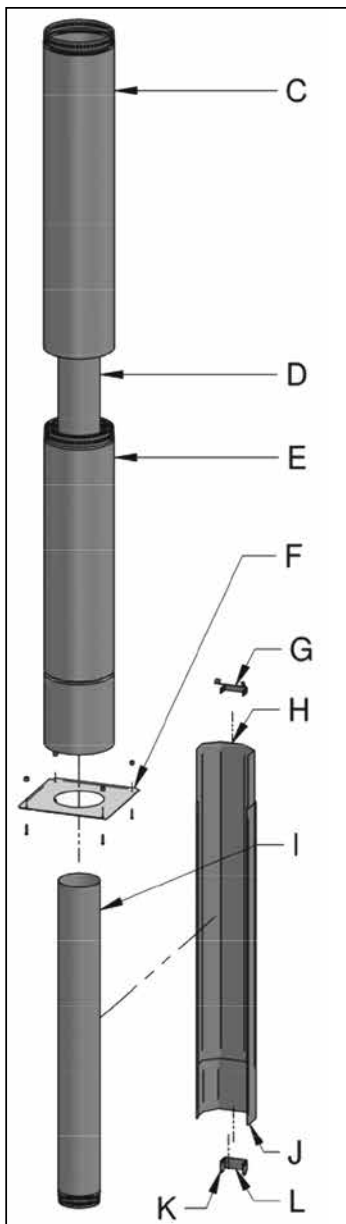
(With 1200mm long Outer Slip Extension & Double Flue Shield)

ROOF TERMINATION
KIT 951909



- A** 1 X 150mm Anti Down Drought Combination Cowl
- B** 1 X Flue Pipe 150mm x 600mm - 50mm to Swage, SS
- C** 1 X Outer Slip Casing - 253mm x 1200mm - Galv.
- D** 1 X Flue Pipe 150mm x 1200mm -50mm to Swage- SS
- E** 1 X Flue Comb. Casing- 200/250/1200 –Galv.
- F** 1 X Ceiling Plate 150mm (345 X 345) - SS

STARTER KIT 951902



- G** 1 X MFI Flue Shield Top Bracket
- H** 1 X MFI Flue Shield Inner
- I** 2 X Flue pipe 150mm x 1200mm- 38mm to Swage- SS - VHT
- J** 1 X MFI Flue Shield Outer
- K** 1 X MFI Flue Shield Bottom Bracket (Convection)
- L** 1 X MFI Flue Shield Bottom Bracket (Radiant)
- 4 X Ceiling Plate Ceramic Spacers
- 4 X Screw—521651

This flue kit has been tested and complies to AS/NZS 2918:2001, Appendix F test.

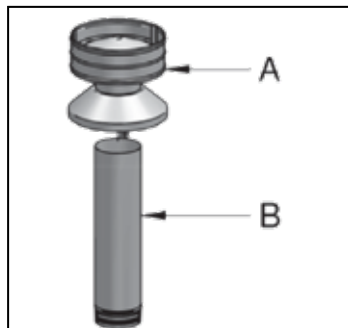
GDFLU013M

Free Standing Flue Kit 150 with Combination Cowl

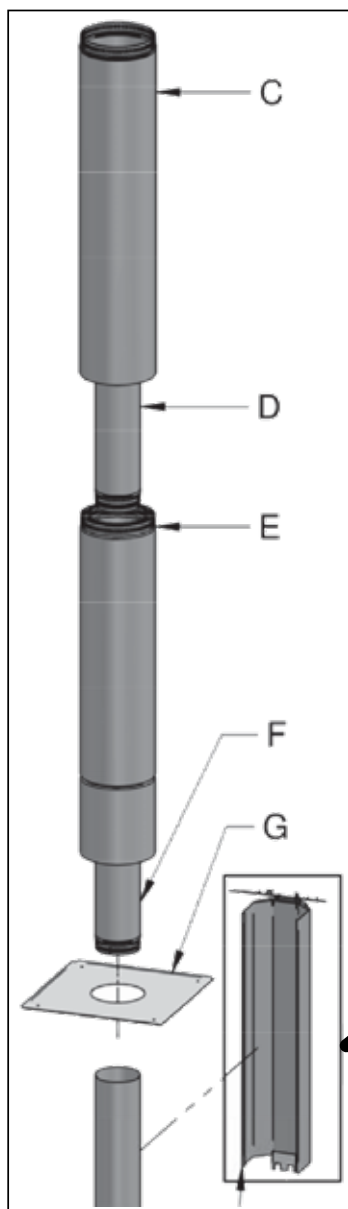
(With 1200mm long Outer Slip Extension & 900mm Double Flue Shield)

- Suitable for Mackenzie R10000 and R5000 Wood Stacker

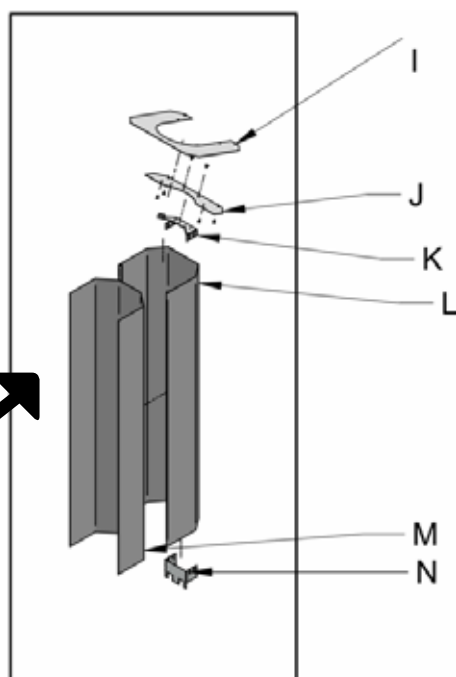
ROOF TERMINATION KIT
951909



STARTER KIT 951910



- A** 1 X 150mm Anti Down Drought Combination Cowl
- B** 1 X Flue Pipe 150mm x 600mm- 50mm to Swage, SS
- C** 1 X Outer Slip Casing - 253mm x 1200mm - Galv.
- D** 1 X Flue Pipe 150mm x 1200mm -50mm to Swage- SS
- E** 1 X Flue Comb. Casing 200/250/1200- Galv.
- F** 2 X Flue 150 x 1219 - SS - VHT
- G** 1 X R10000 Ceiling Plate 504X504 SS (supplied with fire)
- H** 1 X R10000 Double Flue Shield
- I** 1 X R10000 Flue Deflector Part 2
- J** 1 X R10000 Flue Deflector Part 1
- K** 1 X MFI Double Flue Shield Top Bracket
- L** 1 X R10000 Flue Shield Outer Painted
- M** 1 X R10000 Flue Shield Inner SS
- N** 1 X MFI Flue Shield Bottom Bracket (Radiant)
- 4 X Ceiling Plate Ceramic Spacers
- 4 X Screw - 521651
- 2 X Screw - 521089
- 4 X Rivet - 524038



This flue kit has been tested and complies to AS/NZS 2918:2001, Appendix F test.

150mm Drop Box for Angle Ceiling Installations

Note:

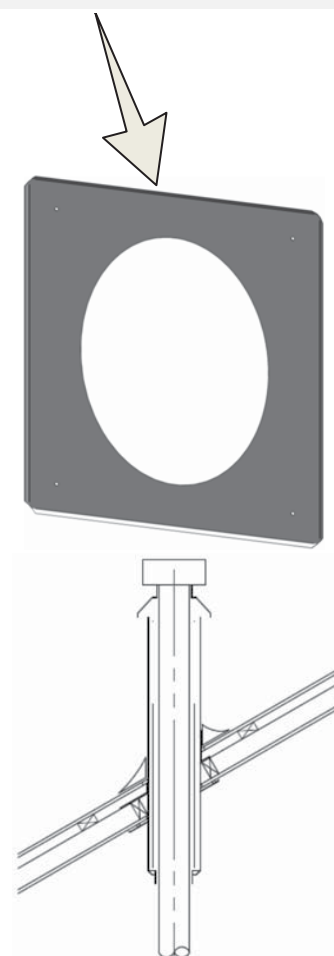
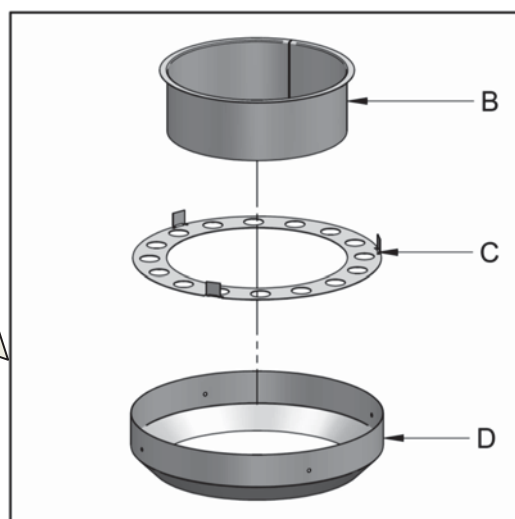
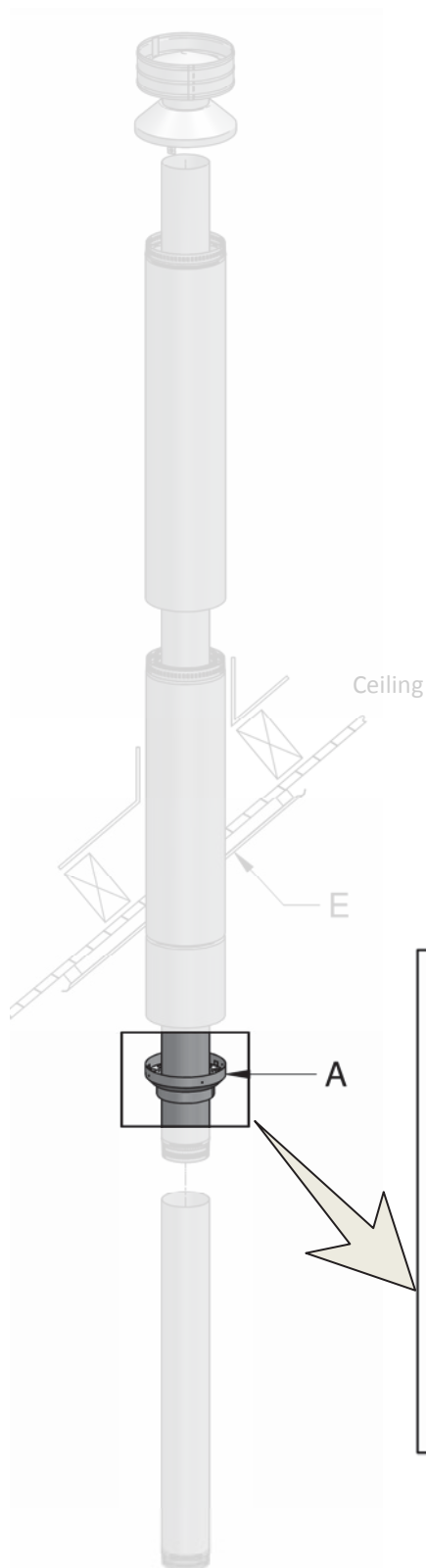
- Does not include flue kit.
- Suitable for GDFLU011M, GDFLU012M and GDFLU013.

DROP BOX KIT

- | | |
|----------|------------------------------------|
| A | Drop Box |
| B | 1 X 250 Drop Box Flanged Pipe |
| C | 1 X 250 Drop Box Air Flange |
| D | 1 X 250 Drop Box Cover |
| | 4 X Ceiling Plate Ceramic Spacers |
| | 4 X Screw - 521651 |
| | 4 X Casing Fixing Brackets - Galv. |

Order separately specifying ceiling angle

- | | | |
|----------|---|---------------|
| E | 1 X 250mm S/S Ceiling Plate. Options Available for 0/15/30/40 Degree Ceiling Roofs: | |
| | 951945 - 0 ° | 951935 - 15 ° |
| | 951936 - 30 ° | 951937 - 40 ° |



Drop Box for Sloping Ceiling
with or without Cavity

This drop box kit has been tested and complies to AS/NZS 2918:2001, Appendix F test.

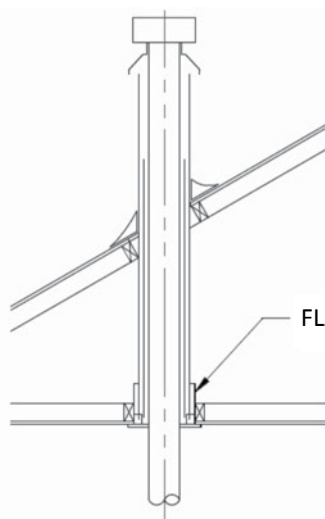
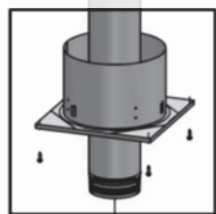
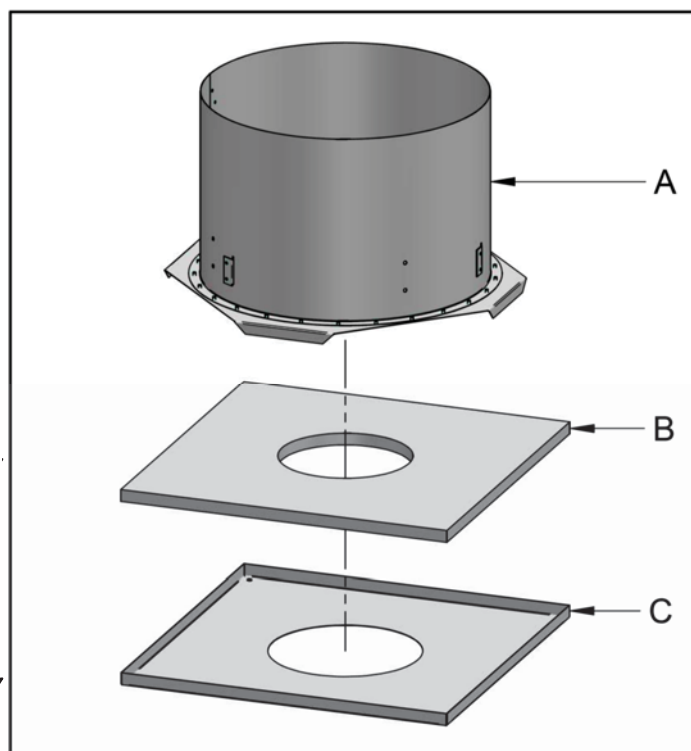
150mm Opti Flue Kit Option for Flat Ceiling Installation

Note:

- Does not include flue kit.
- Suitable for GDFLU011M, GDFLU012M and GDFLU013.
- For GDFLU013M – Attach 504 X 504 R10000 ceiling plate over the 360mm X 360mm Opti Kit ceiling plate

FLAT CEILING OPTI KIT

- A** 1 X Opti Box 300mm OD Assy
- B** 1 X Opti Flat Insulation Blanket
- C** 1 X 150mm Opti Flat Ceiling Plate SS
- 4 X Screw - 521651



Opti option
Flat Ceiling with Cavity

This Opti flue kit has been tested and complies to AS/NZS 2918:2001, Appendix F test.

150mm Opti Flue Kit Option for Angle Ceiling Installations

Note:

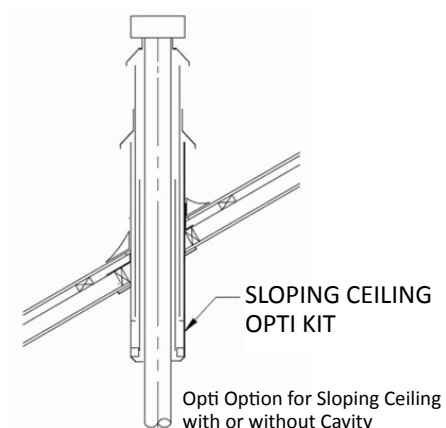
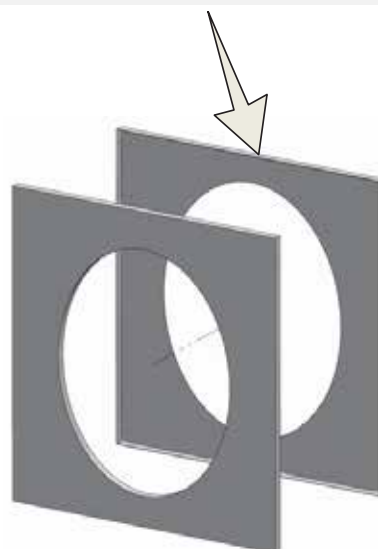
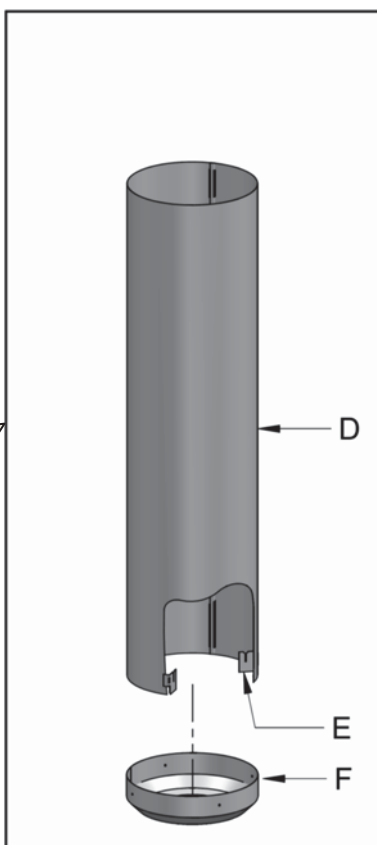
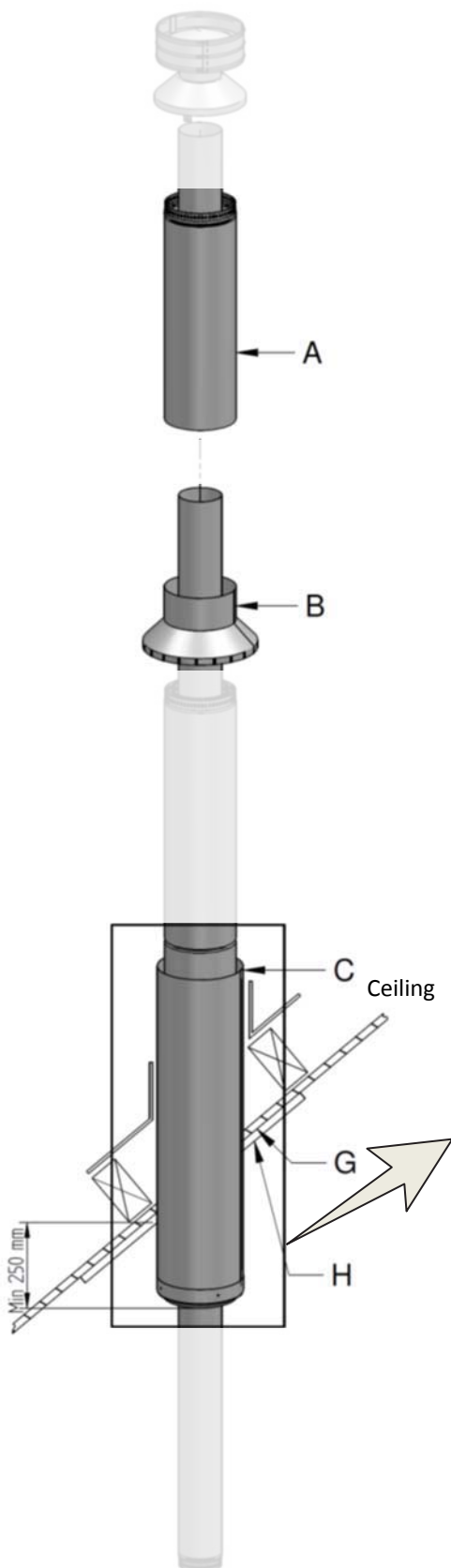
- Does not include flue kit.
- Suitable for GDFLU011M, GDFLU012M and GDFLU013.

ANGLE OPTI KIT

| | |
|----------|------------------------------------|
| A | 1 X Outer Casing 250mm X 800mm S/S |
| B | 1 X 300mm Opti Casing Cover |
| C | 1 X Opti Box Assy |
| D | 1 X 300mm OD x 1200mm Opti Pipe |
| E | 3 X Opti Box Bracket |
| F | 1 X 300mm Opti Box Cover |
| | 4 X Screw - 521651 |
| | 4 X Casing Fixing Brackets - Galv. |

Order separately specifying ceiling angle

| | | |
|--------------|--|---------------|
| G + H | 1 X 300mm Opti - Ceiling Plate + Opti Insulation Blanket Kit. Option Available for 0/15/30/40 Degree Ceiling Roofs: | |
| | 951965 - 0 ° | 951961 - 15 ° |
| | 951958 - 30 ° | 951947 - 40 ° |



This Opti flue kit has been tested and complies to AS/NZS 2918:2001, Appendix F test.

FLU00001M

Flue Pipe 150 mm x 1200 mm
(SS Unpainted)

**FLU00003M**

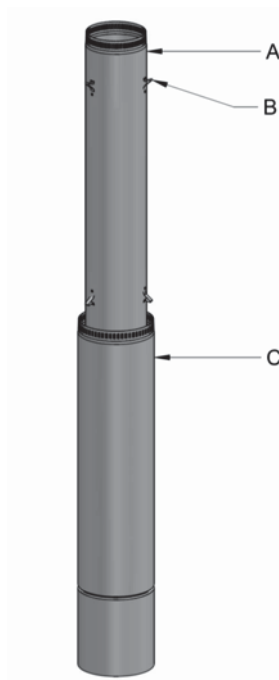
Flue 150mm x 1200 – 38mm to
Swage, (SS-VHT painted)

**FLU00004M**

Flue Outer Slip Casing Ext.
253mm x1200mm (Galvanized)

**FLU00002M**

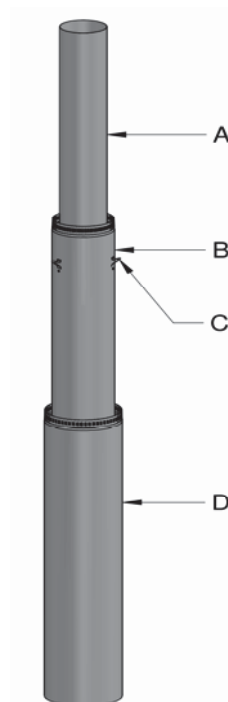
200mm/250mm Inner/Outer Combination Casing



- A** 1 X Inner Shield 1188mm OD 200mm
 - B** 6 X Flue Casing Comb. Spacer 25mm SS
 - C** 1 X Outer Shield 1200mm OD 250mm
- 6 X Rivet - 524035

FLU00006M

Flue Extension-150mm/200mm/250mm
Combination Casing

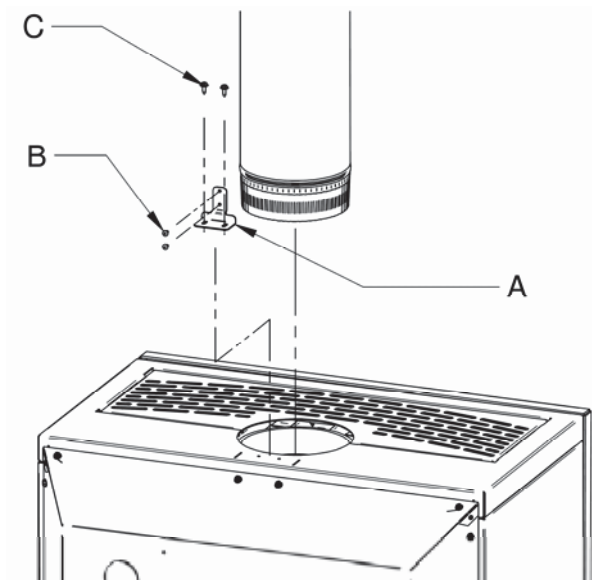


- A** 1 X Flue Pipe 150mm X 1200mm -50mm to Swage, SS
 - B** 1 X Flue Inner Casing 200mm x 1188mm –Galv.
 - C** 3 X Flue Casing Comb. Spacer 25mm S/S
 - D** 1 X Flue Outer Casing ZC 250mm x 1200mm –Galv.
- 3 X RIVET - 524035

Flue Restraint Bracket (For Convection Models only)

Note:

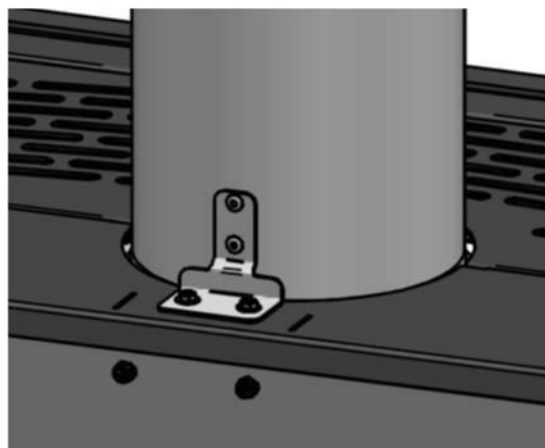
– Suitable for ATLANTA/F2000/F2200C/F3000/F3300C/GRANDVIEW/F10000R/HESTIA 2.



A 1 X Flue Restraint Bracket

2 X Screw - 521643

2 X RIVET - 524035

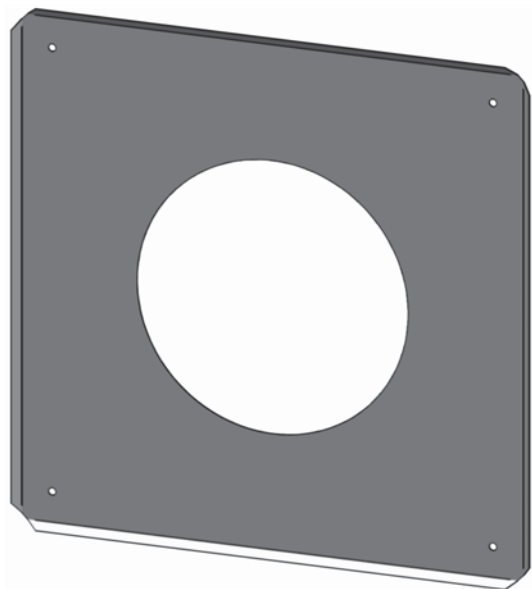


951515

Ceiling Plate 150mm 345x345 Stainless Steel – Flat Ceiling

Note:

– Suitable for GDFLU011M and GDFLU00012M.



1 X Ceiling Plate 150mm

4 X Ceiling Plate Ceramic Spacers

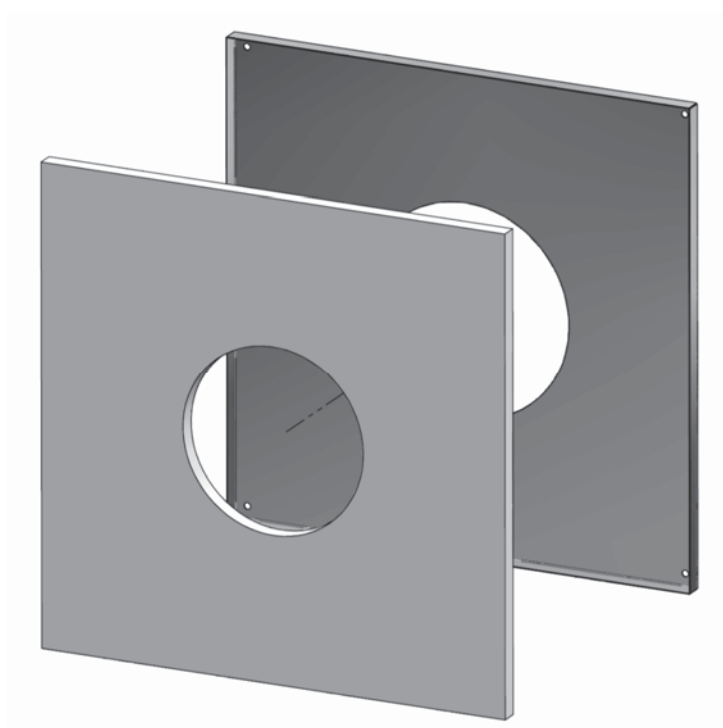
4 X Screw - 521651

951920

Opti Ceiling Plate 150mm Stainless Steel +Blanket Pack – Flat Ceiling

Note:

– Suitable for GDOPTIFLAT.



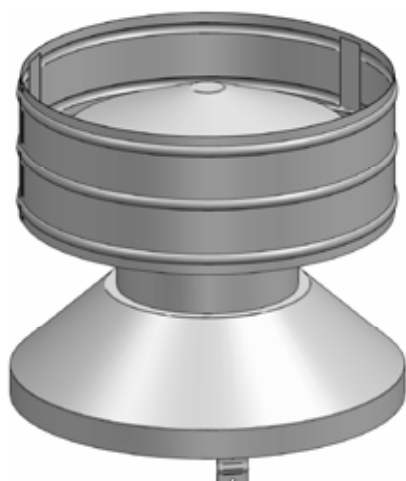
1 X Ceiling Plate 150mm

1 X Opti Flat Insulation Blanket

4 X Screw - 521651

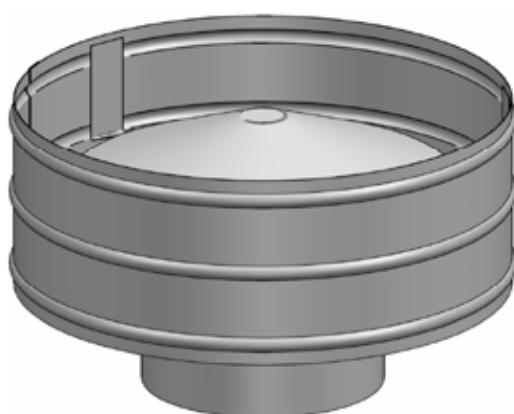
951916

150mm ADDCC – Anti Down Draft Combination Cowl
Stainless Steel



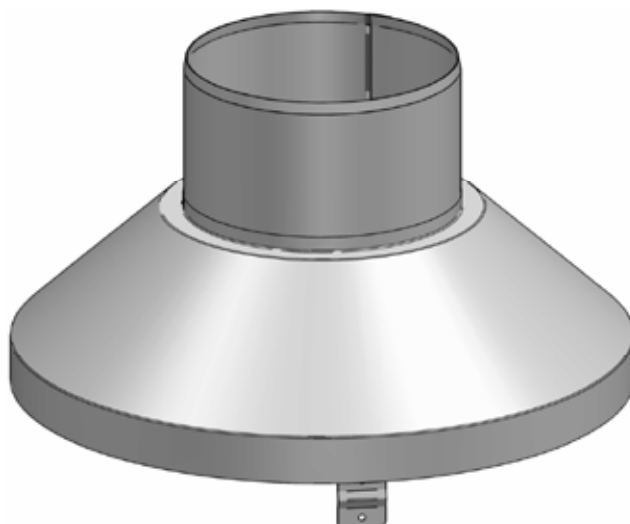
951917

150mm ADDCC – Anti Down Draft Cowl Stainless Steel



951919

150-250mm Casing Cover Stainless Steel



Try the new Masport Heating App



Let us do the work for you. Download the free **Masport Heating Wood Fire Finder** app and we can help you find the wood fire best for your home and even show you what it will look like in your home. Share it with your friends or to show your local wood fire dealer when you are ready to purchase.



Put in your details and preferences to calculate your best options



See the selection of woodfires that are best for you



Use the visualizer to see what it looks like in your own home

Available on ipad and iphone from the Apple App store.



Important Notes

- For detailed installation instructions, refer specification sheets supplied along with the flue product.
- Due to continued product improvement, Glen Dimplex New Zealand Ltd reserves the right to change product specification without prior notification.
- For installation of all Masport products, Glen Dimplex New Zealand Ltd recommends Solid Fuel Appliance Installation Technicians certified by New Zealand Home Heating Association. See www.nzhha.co.nz/members for a certified NZHHA SFAIT Installer in your area.

Masport[®]

Heating

Glen Dimplex New Zealand Ltd
PO Box 58473, Botany, Auckland
www.masportheating.co.nz

Your nearest Masport dealer:

Glen Dimplex New Zealand Ltd's policy is one of continuous development. We reserve the right to change size and specifications without notice. For confirmation of Masport Heating product details please refer to www.masportheating.co.nz. Please refer to the installation and operation instructions before having your Masport Wood Fire installed. A full set of these instructions is supplied with each fire.

OVERNIGHT BURN: It is possible to achieve an overnight burn, when using a mixture of pine and hardwood, burn period may vary due to factors such as moisture, density of fuel, environmental factors and how the unit is operated.